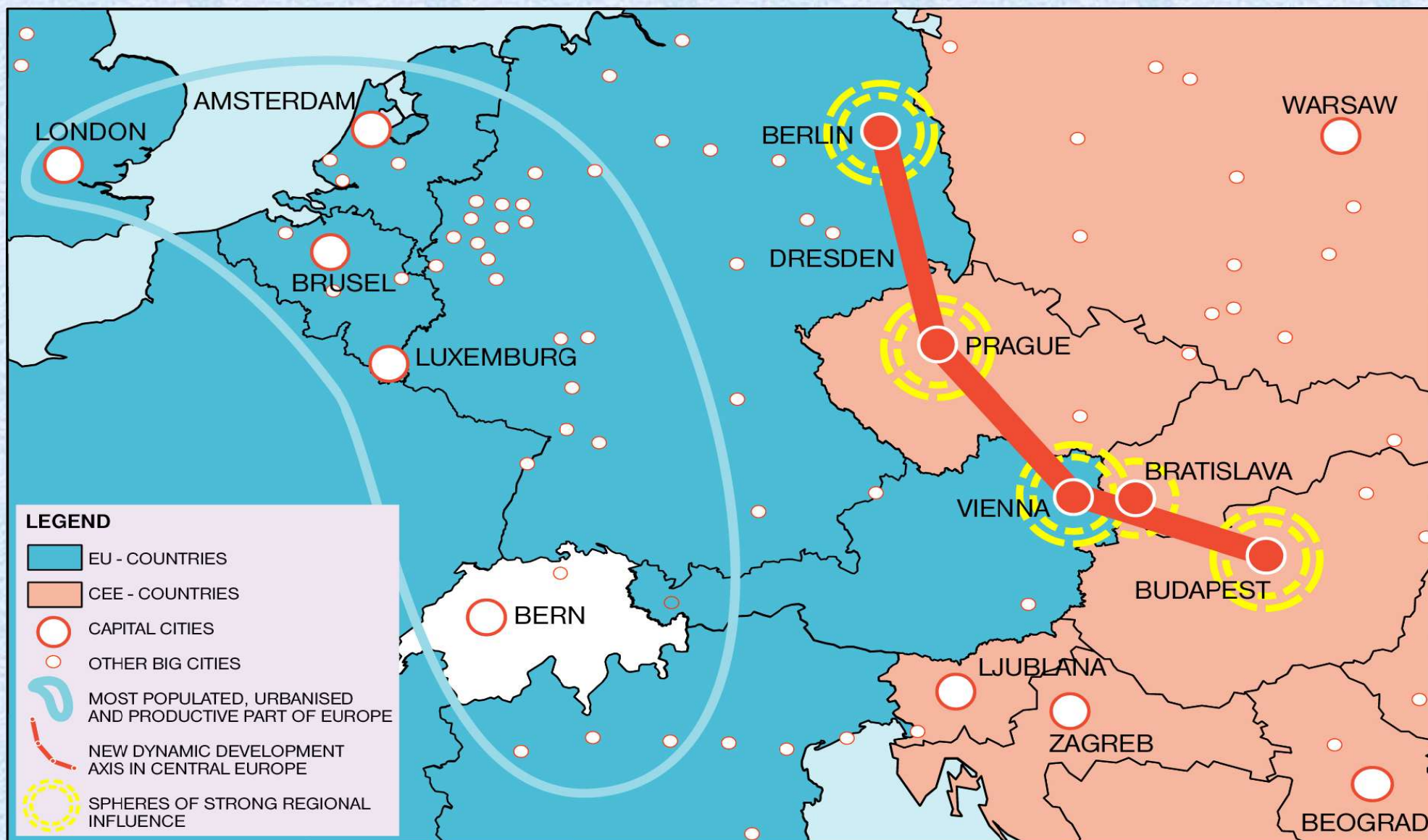


# CO-OPERATION IN NEW CENTRAL EUROPE





# SOME SIMILARITIES BETWEEN BUDAPEST AND PRAGUE



**Historical experience**

**Role and position within the state**

**Economic performance** (regional GDP  
per inhabitant in 2003)

**Entrepreneurial attractiveness** (expected  
future expansion of companies in the next five years)

**Low unemployment rate** (in 2004)

**Population (in 2003)**

- **highly educated** (proportion of the resident population qualified)
- **problem of aging** (proportion of the resident population aged 65+ years)

**Quality of living in the city** (aggregate indicator  
in 2006)

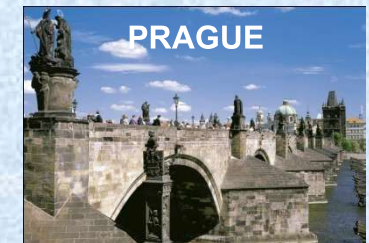
**Problems in the sphere of transportation**

**Problems in the sphere of housing**

**Similar intentions**



**14932.4 EUR**



**16028.6 EUR**

**32**

**34**

**4.4**

**3.9**

**18.0**

**16.3**

**17.64**

**16.24**

**90.8**

**91.8**

uncompleted system of main roads and ring-roads  
car transport and parking in the city centre  
large housing estates around the city  
gateways between East and West of Europe

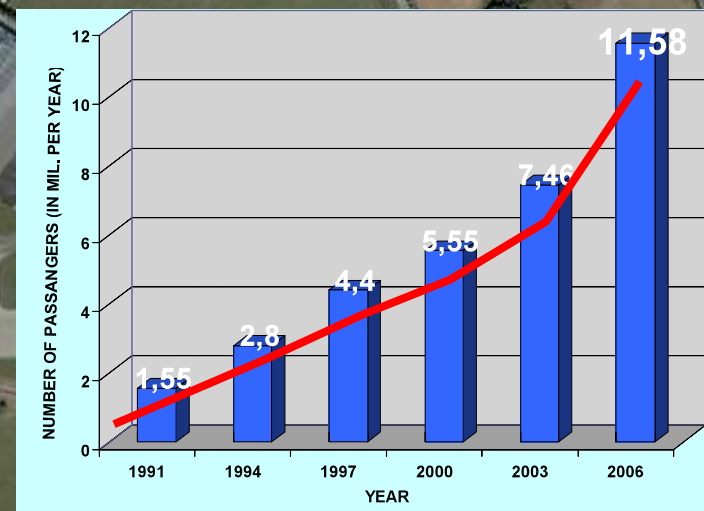
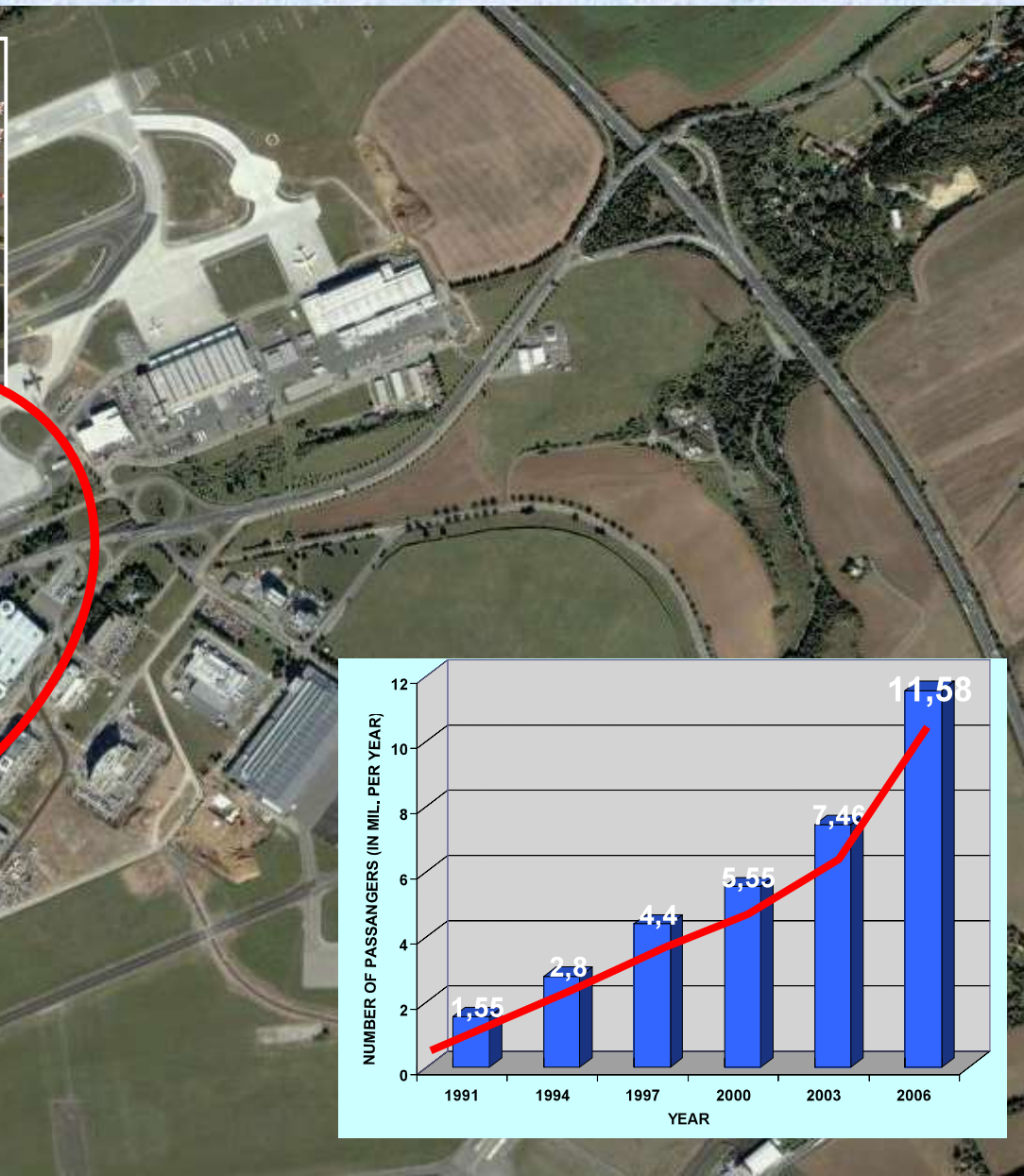


# PRAGUE AIRPORT DEVELOPMENT





# PRAGUE AIRPORT DEVELOPMENT







City Development Authority Prague, Strategic Planning Department

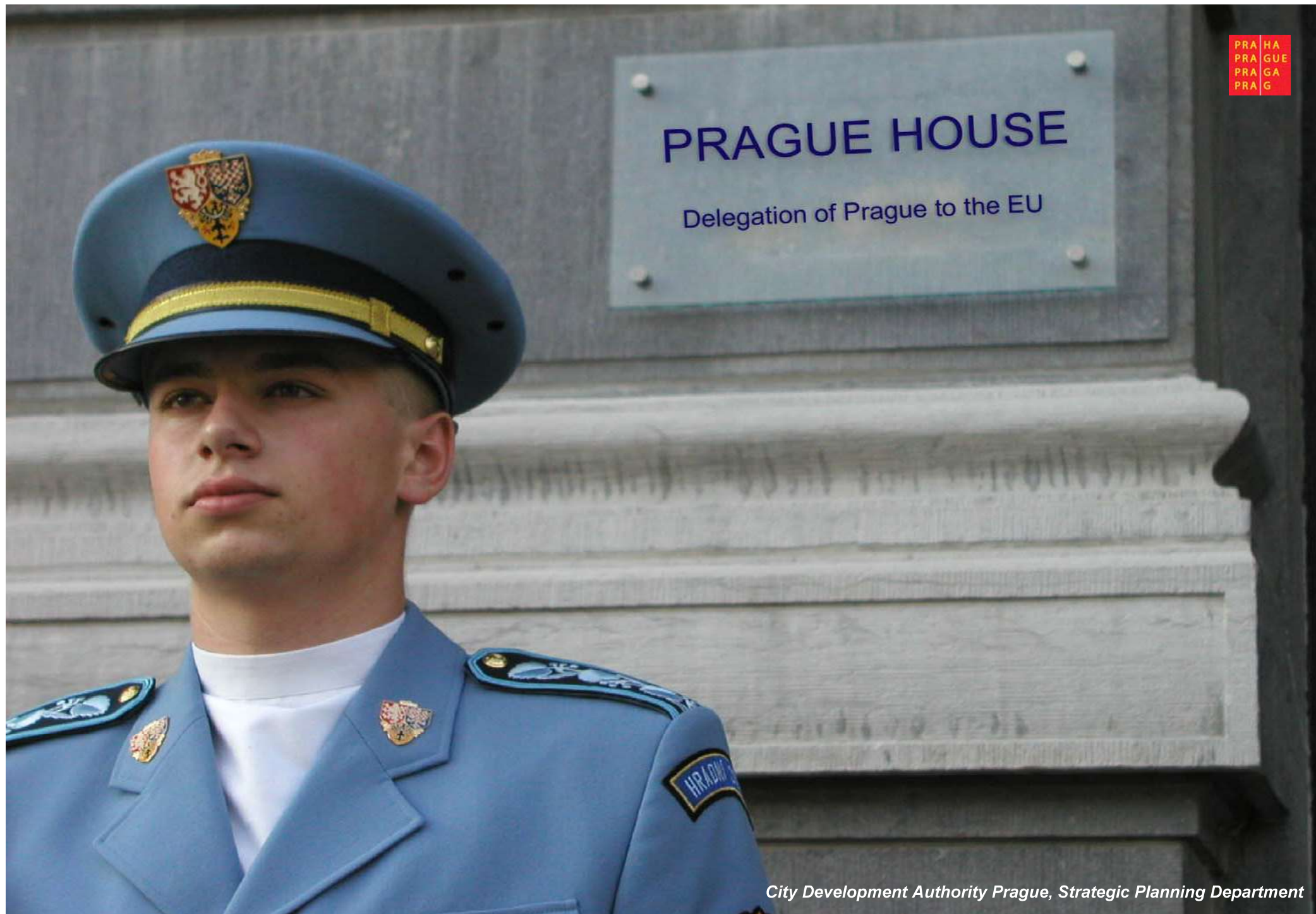












# PRAGUE HOUSE

Delegation of Prague to the EU

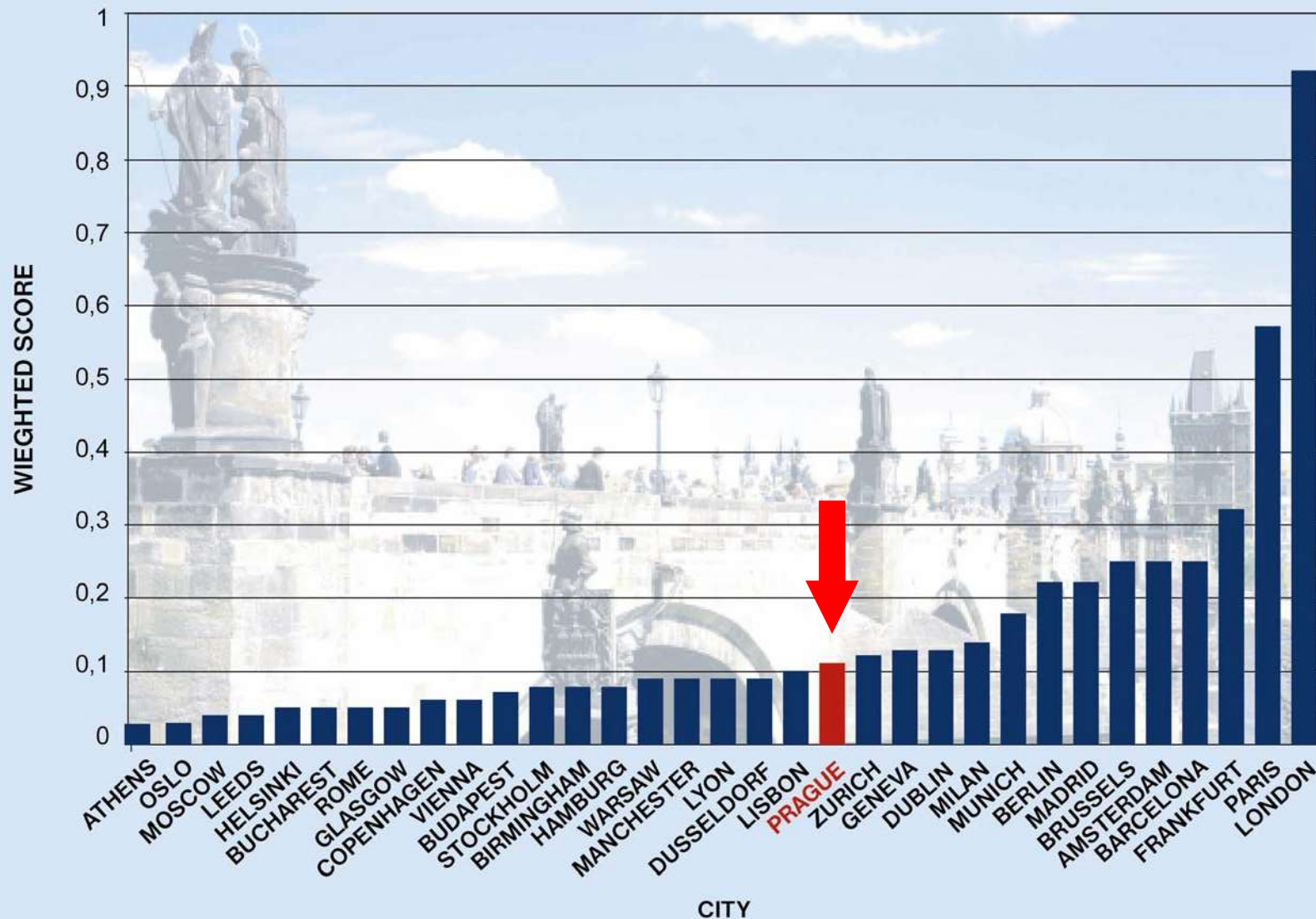


# TOWARDS KNOWLEDGE-BASED ECONOMY

*Prosperous City*

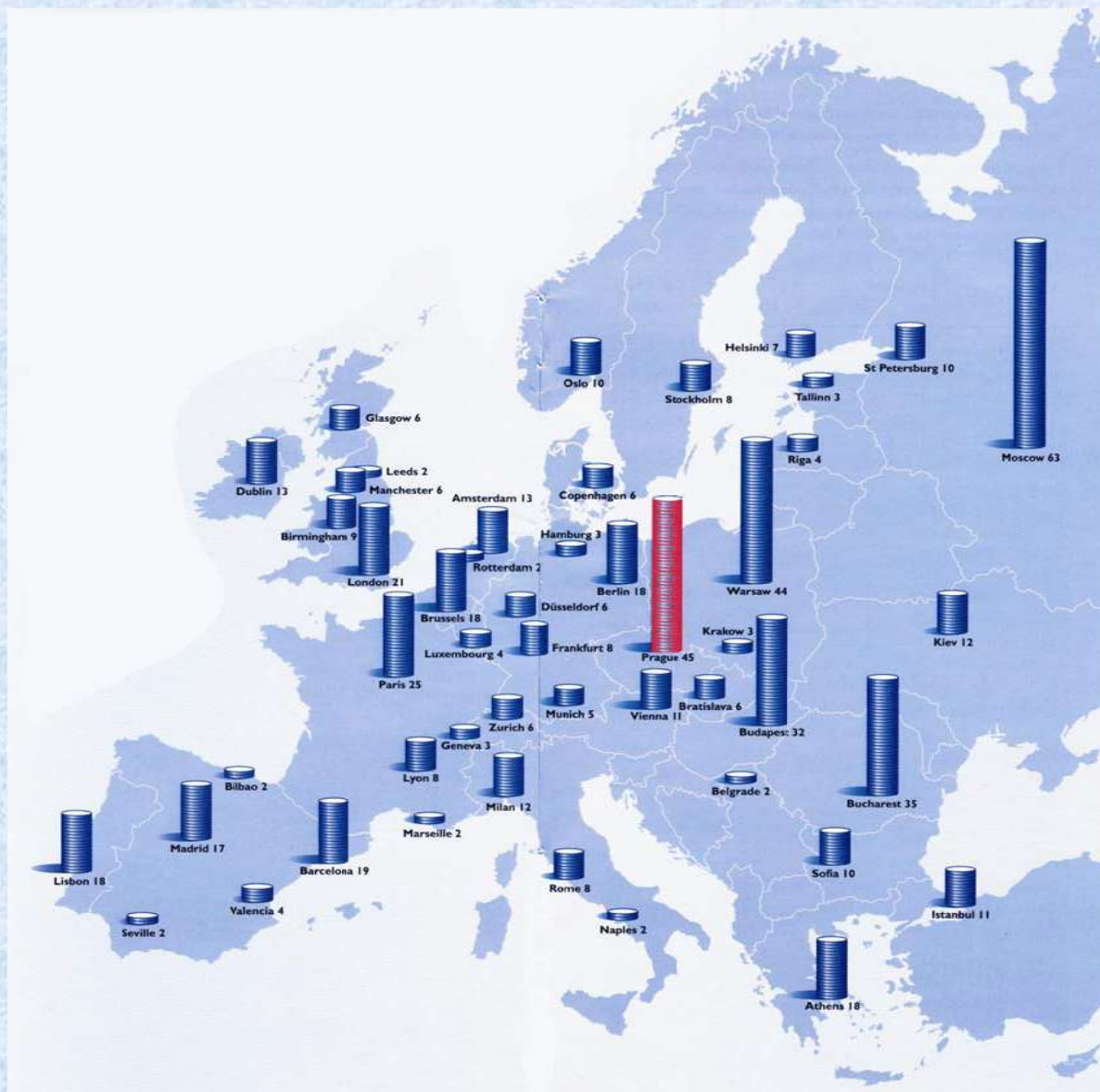


# THE BEST EUROPEAN CITIES TO LOCATE A BUSINESS (2007)



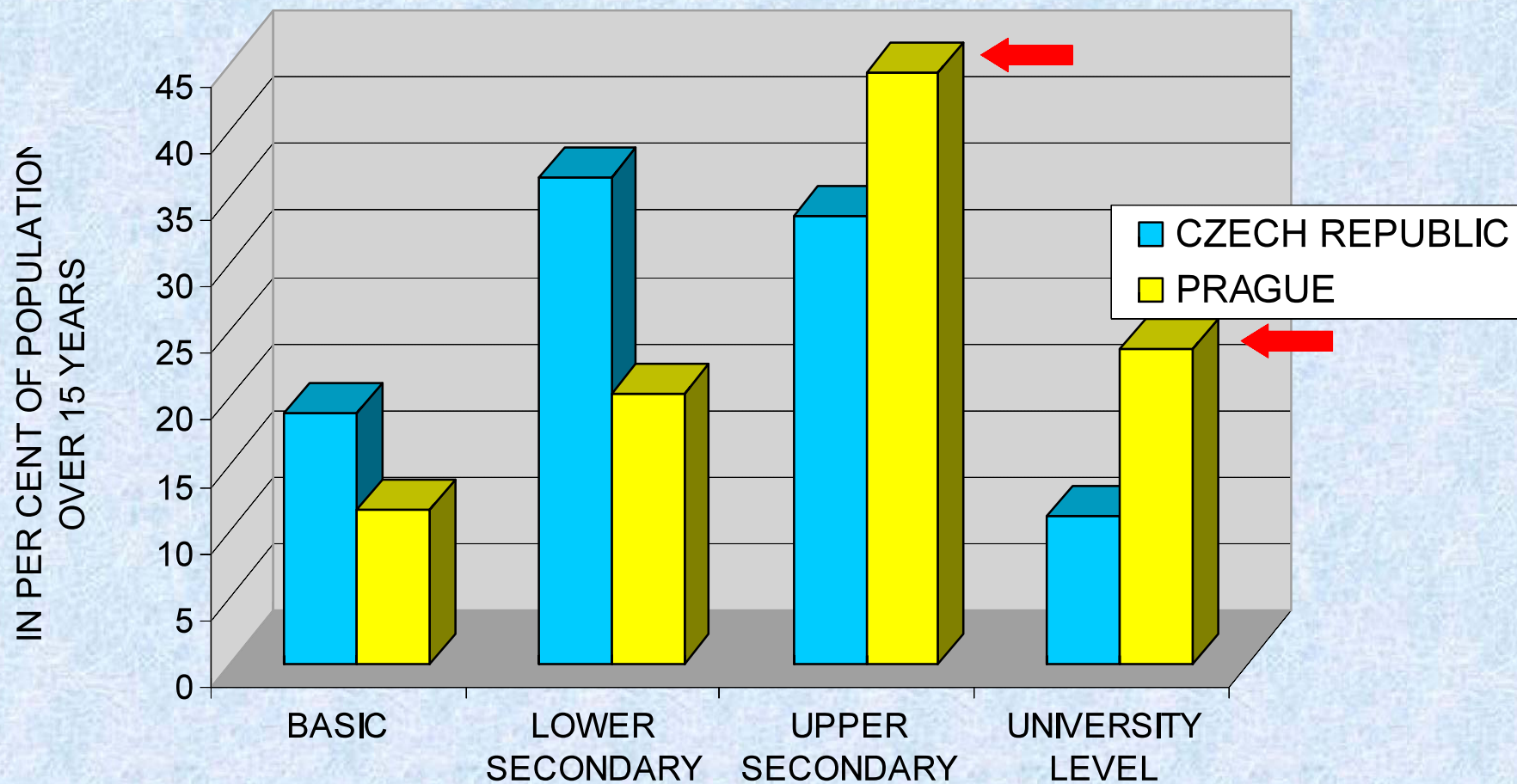


PRA HA  
PRA GUE  
PRA GA  
PRA G



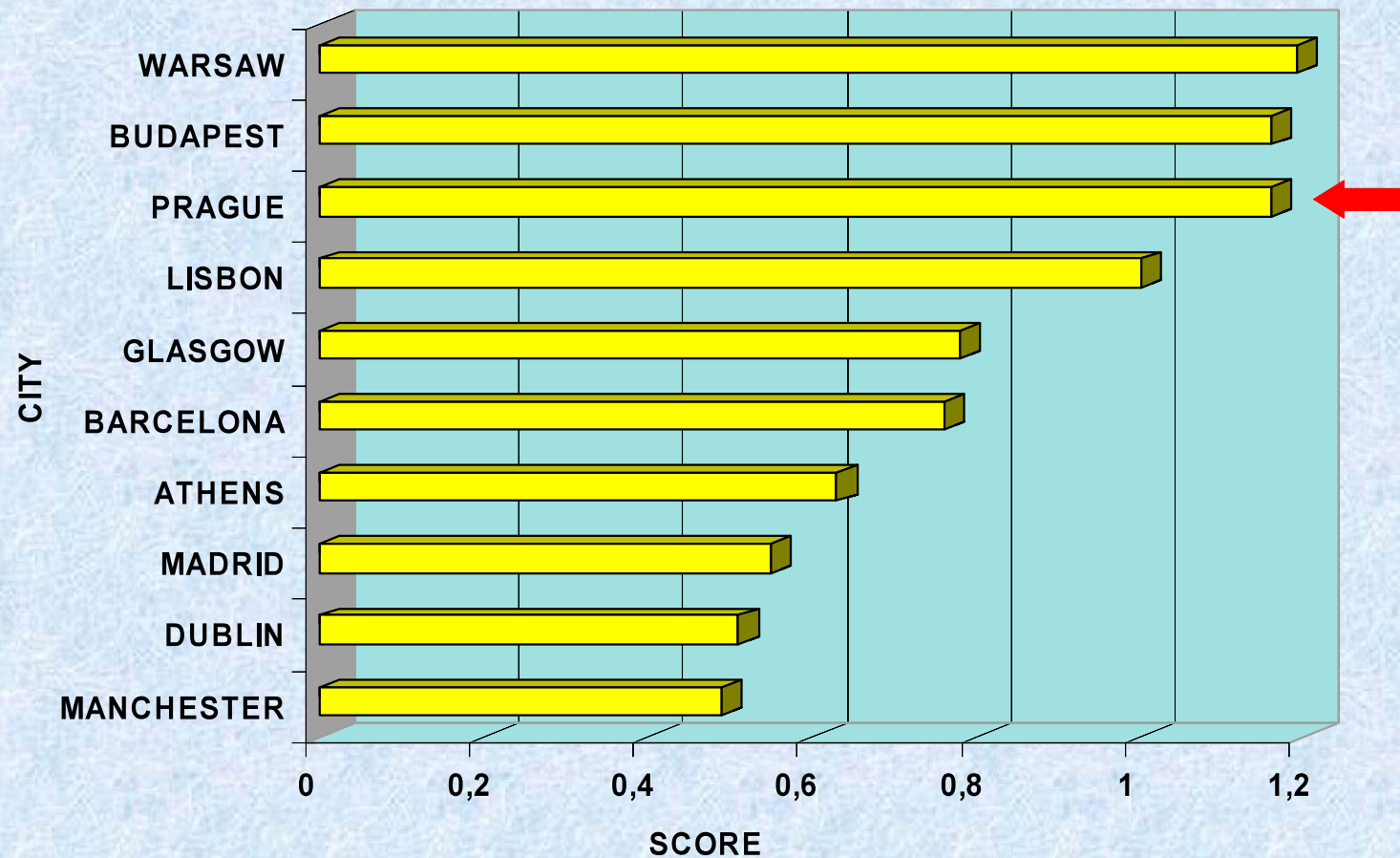


# LEVEL OF EDUCATION IN PRAGUE AND CZECH REPUBLIC





# BEST CITIES IN TERMS OF COST OF STAFF „TOP TEN“





# IN THE CAPITAL OF PRAGUE

there are located:

- **69%** of all capacities of the Czech Academy of Sciences
- **44%** of all Czech R&D institutes
- **44%** of all Czech universities



# INNOVATION STRATEGIES IN THE EUROPEAN REGIONS



## EUROPEAN COMMUNITY

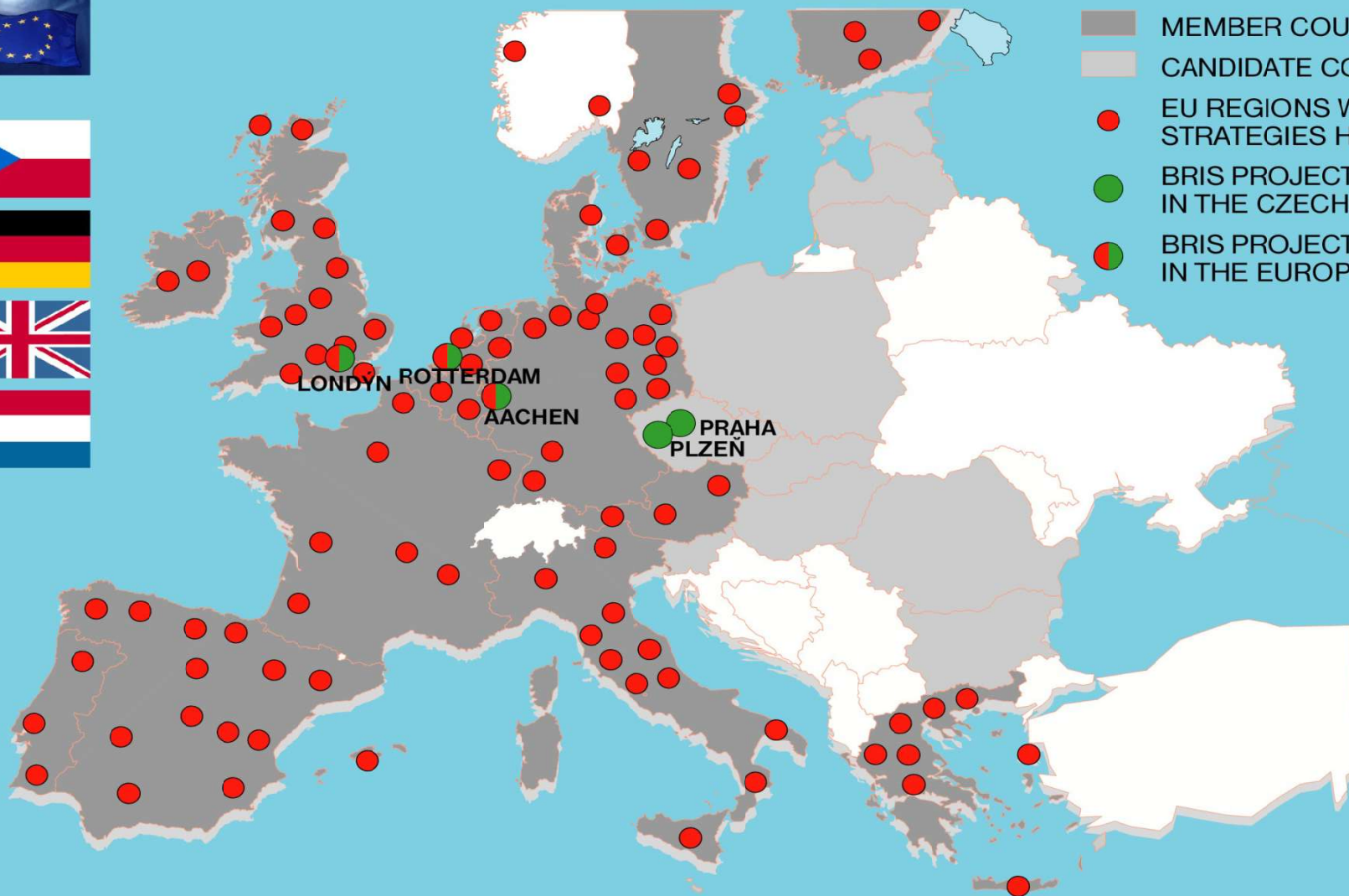
MEMBER COUNTRIES

CANDIDATE COUNTRIES

EU REGIONS WHERE INNOVATION STRATEGIES HAVE BEEN APPLIED

BRIS PROJECT PARTNERS IN THE CZECH REPUBLIC

BRIS PROJECT PARTNERS IN THE EUROPEAN COMMUNITY





# **PRAGUE CAN SUPPORT R&D AND INNOVATIONS IN THE CITY IN THE FOLLOWING WAYS:**

- Preparation of visions and strategies
- Initiation of partnership between public, business, and R&D sectors, and universities
- Stimulation of networking
- Provision of financial incentives, particularly from EU Structural Funds
- Financing or co-financing of investments in city facilities
- Lobbying at regional, national and European levels
- Overall improvement of the city's attractiveness, in particular its transport accessibility, quality of life and environment



# BOHEMIAN REGIONAL INNOVATION STRATEGY ACTION PLAN



(Prague contribution to the Lisbon Agenda)

## **Some of the proposed activities:**

- Regional Council for Innovation
- Prague business incubator
- Centre for Knowledge and Technology Transfer
- Prognosis of technological and sectoral trends in the region
- Monitoring and benchmarking the innovation performance of the region
- Prague's participation in the national system of SME and innovation support



# SOME EXAMPLES OF PRAGUE PROJECTS CO-FINANCED FROM EU FUNDS IN 2004-2006



**Innovation centre and business incubator  
in Prague 9**

Inovační centrum a podnikatelský inkubátor • Celkový rozpočet projektu: 168.579.112 Kč • Příspěvek EU: 71.169.711 Kč

Fotografie © Studio Petřina



# „PRVEK“ – PRAGUE COUNCIL FOR RESEARCH AND ECONOMY



(Consultative body to the Lord Mayor, established in 2011)

## **Members:**

- The Mayor of Prague
- The Deputy Mayor responsible for education
- Councillor responsible for entrepreneurial sphere
- Czech Academy of Sciences
- Czech Technical University in Prague
- The University of Economics Prague
- Association of Small and Medium-Sized Enterprises and Crafts CZ
- Association of Innovative Entrepreneurship
- The representative of the Prague entrepreneurs

**Secretary:** City Development Authority Prague



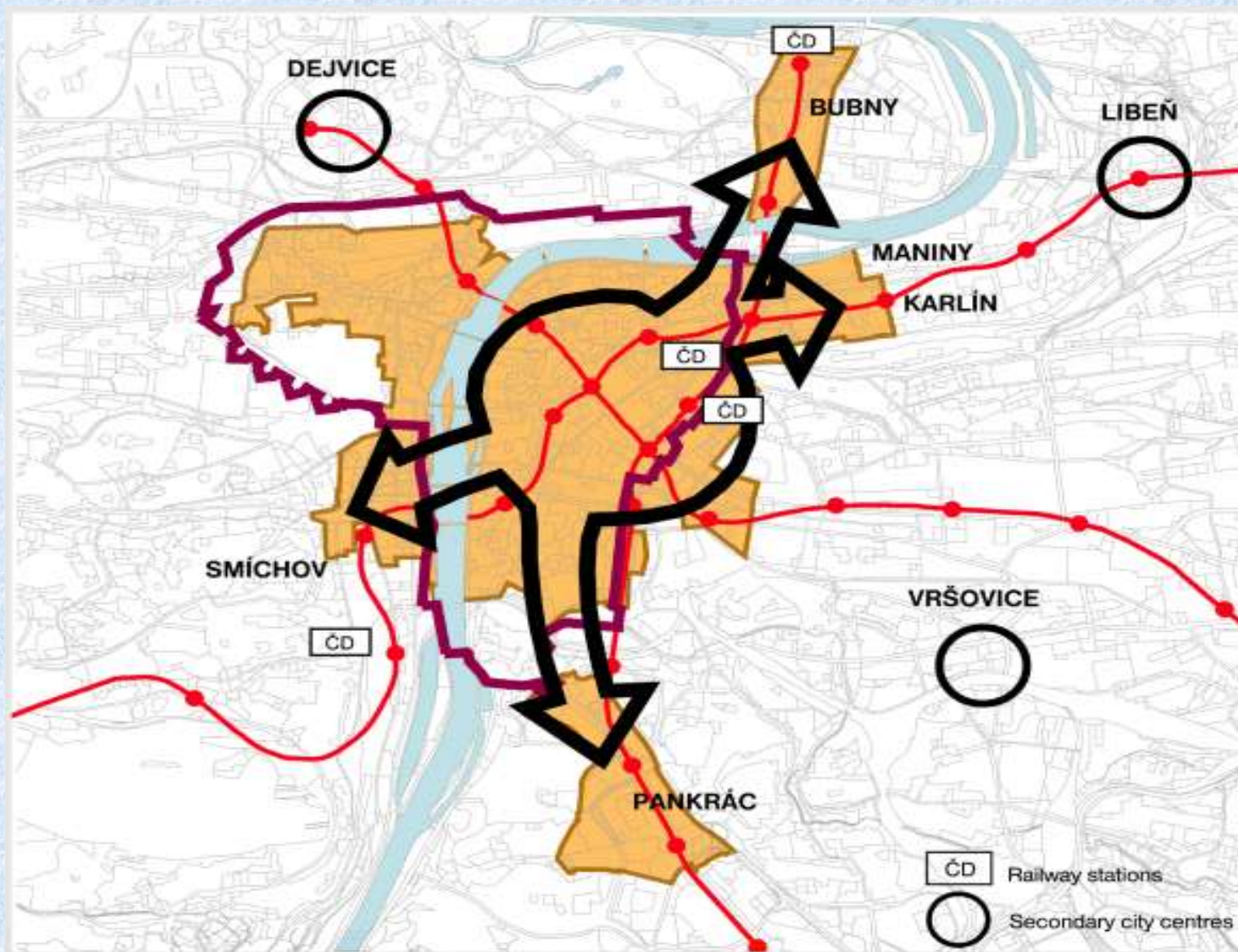
# TOWARDS POLYCETRIC PRAGUE

***Well-balanced City  
and new opportunities for investment  
and businesses***



# STRATEGIC GOAL – POLYCENTRIC PRAGUE

## CITY CENTRE EXPANSION





# NEW CITY CENTRE SMÍCHOV

PRA  
PRA  
PRA  
PRA

HA  
GUE  
GA  
G

City Development Authority Prague  
Strategic Planning Department, June 2001



# NEW CITY CENTRE SMÍCHOV

PRA  
PRA  
PRA  
HA  
GA  
G





# NEW CITY CENTRE SMÍCHOV „ANDĚL“



***Zlatý Anděl (Jean Nouvel, 1996)***



***Anděl City (2002-2005)***



***Anděl City (2002-2005)***





# NEW CITY CENTRE KARLÍN

PRAHA  
PRAGUE  
PRAHA  
PRAGUE

City Development Authority Prague  
Strategic Planning Department, June 2001



# NEW DEVELOPMENTS IN KARLÍN AREA



*Corso (Bofill)*



*Karlín Palace (Bofill)*



*River Diamond (Šafer – Hájek)*





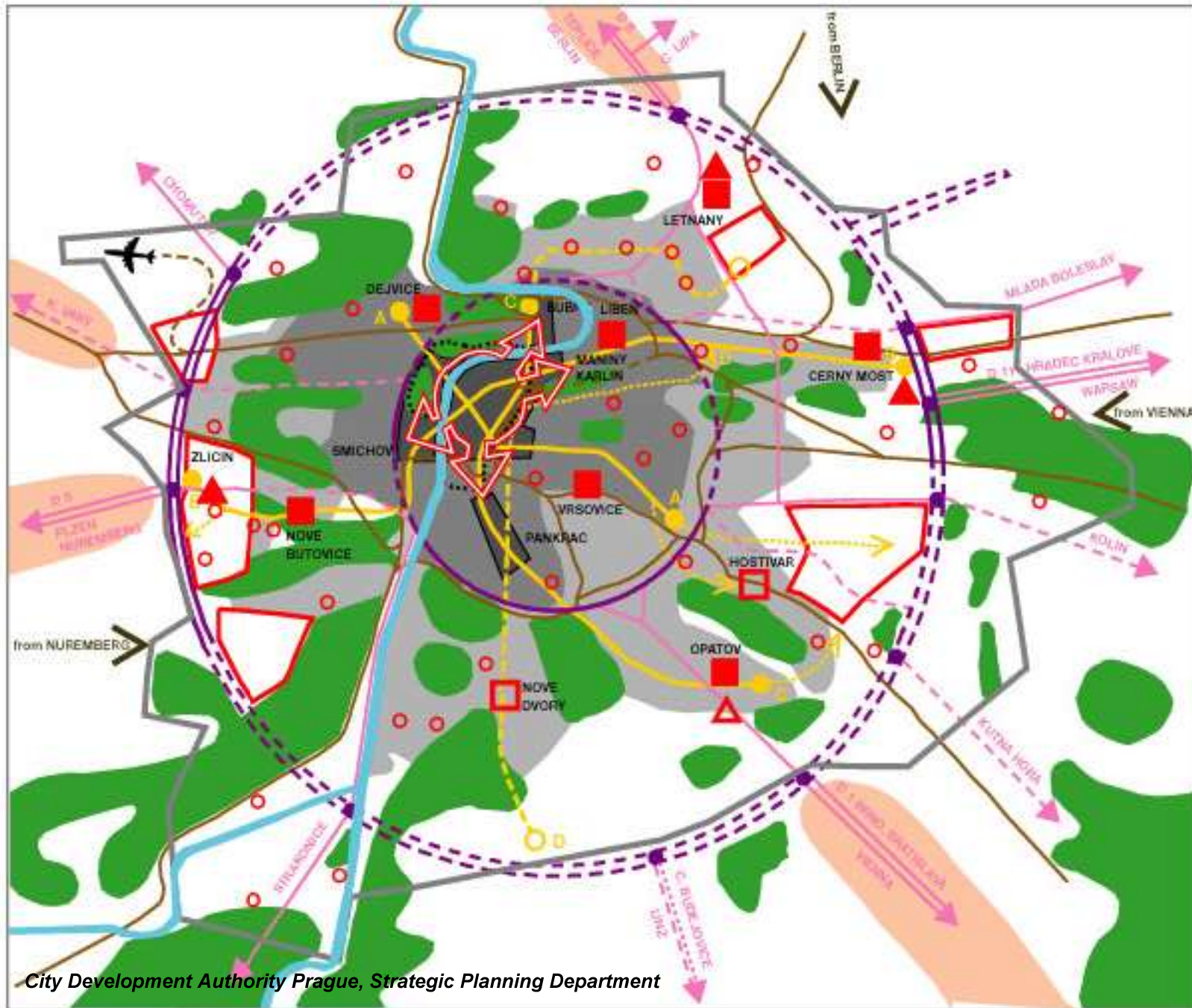
# SELECTED LARGE DEVELOPMENT AREAS IN PRAGUE

## HOLEŠOVICE – BUBNY (PROPOSAL)





# PRAGUE - FROM MONOCENTRIC TO POLYCENTRIC CITY STRUCTURE



- Key**
- city centre expansion
  - district centres
  - local centres
  - regional commercial centres
  - large-scale development areas
  - significant commercial activities in the regional hinterland
  - metro lines
  - inner ring road
  - outer ring road
  - motorways
  - other main routes
  - significant railways
  - proposed high-speed railways
  - airport
  - significant green areas
  - city centre
  - inner city
  - outer city
  - regional hinterland
  - boundary of the Prague historical conservation area
  - administrative boundary of Prague



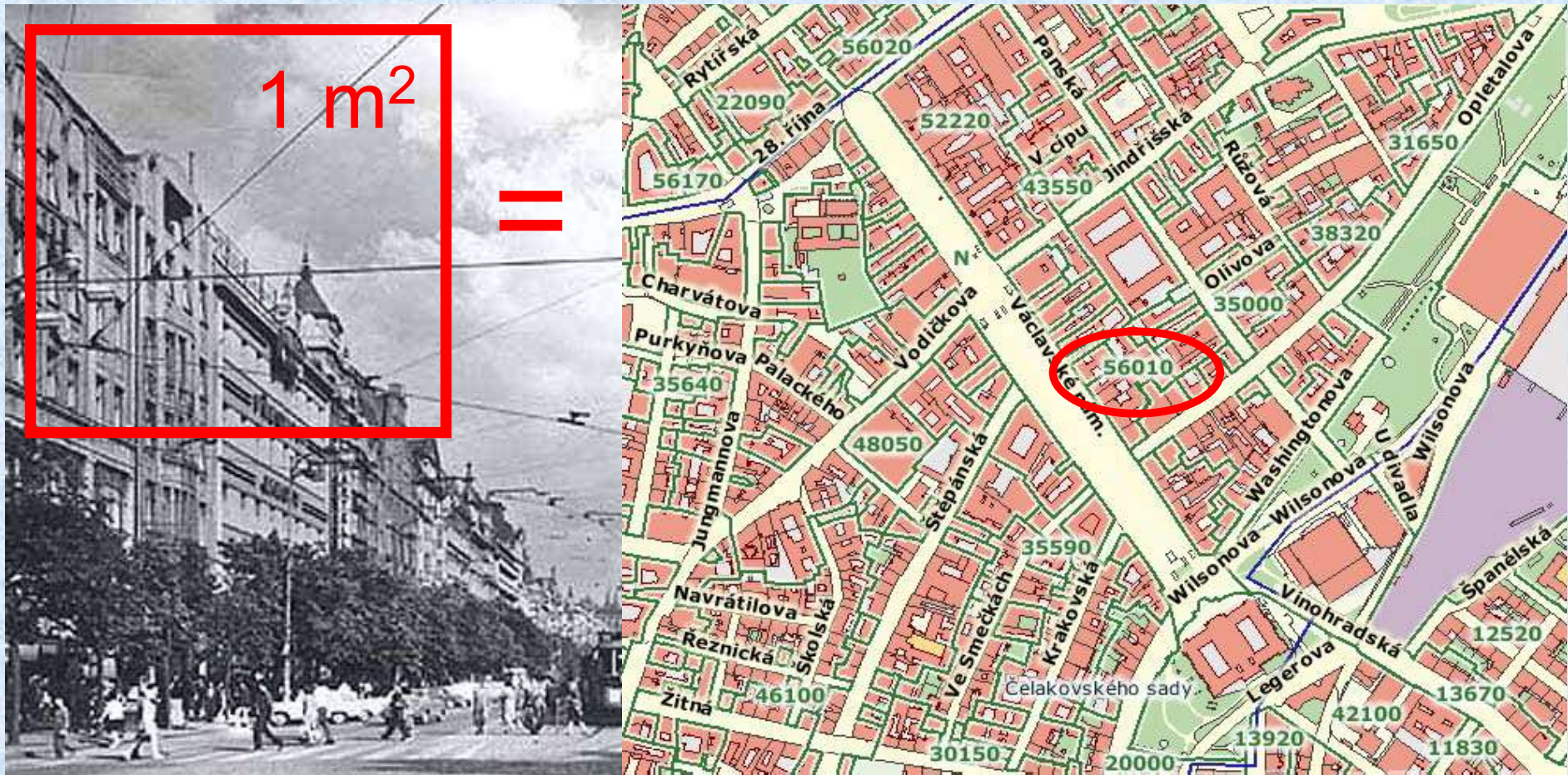
# NEW TRENDS IN TERRITORIAL DEVELOPMENT OF THE CITY

## *New Use for Prague Brownfields*



# PRICE OF LAND IN PRAGUE

## (IN THE PAST AND NOW)



1980

2007



# SOME OF THE PRAGUE'S DEVELOPMENT AREAS



## LIBEŇ – MANINY

**P**ossible multi-functional land use pattern of the site  
- total proposed floor space 800,000-sqm

**T**he major part of the area was flooded in 2002

**R**ealization of the flood protection began in 2003

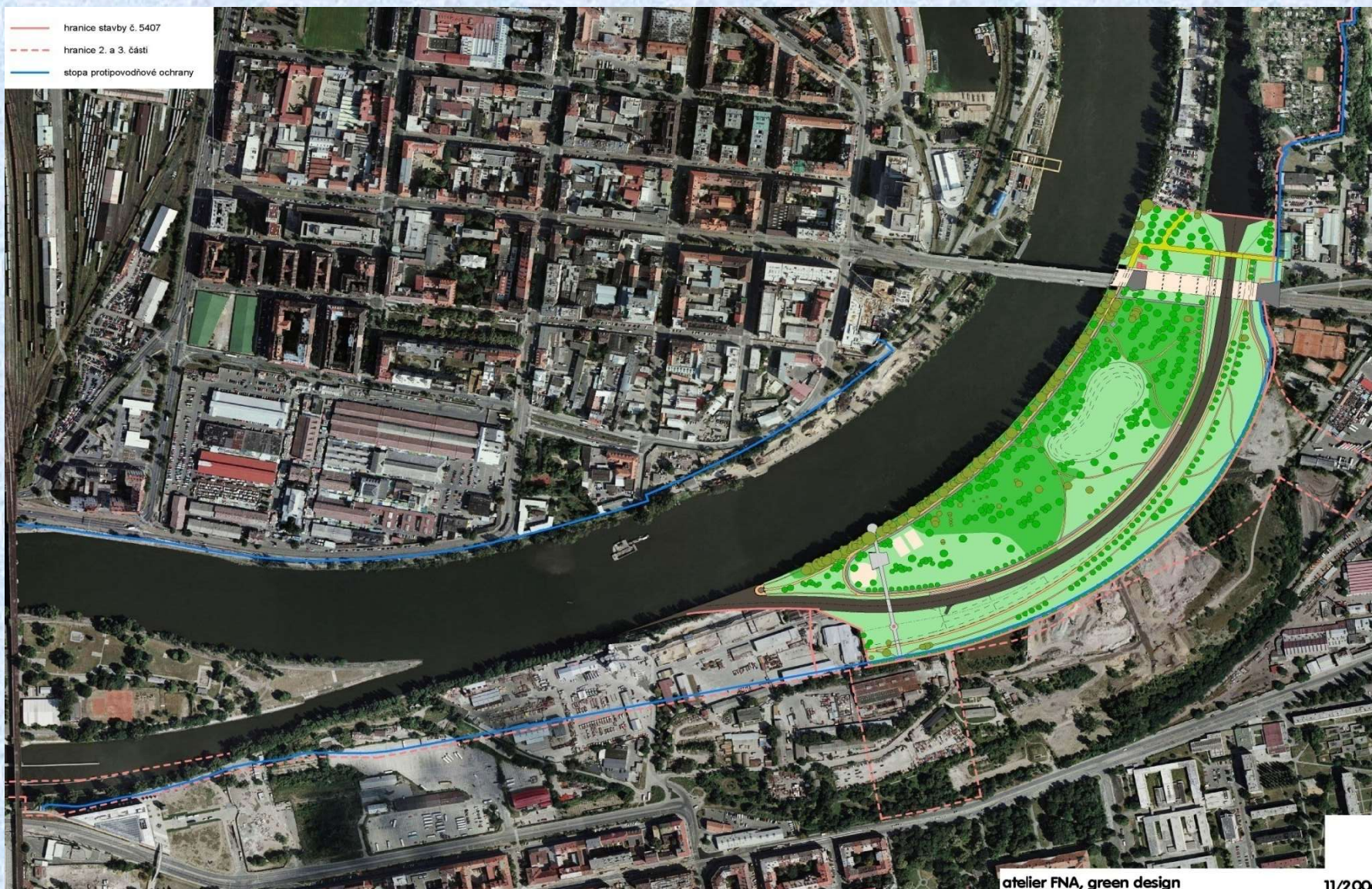
**G**ood traffic access, gradual construction of new access service communication



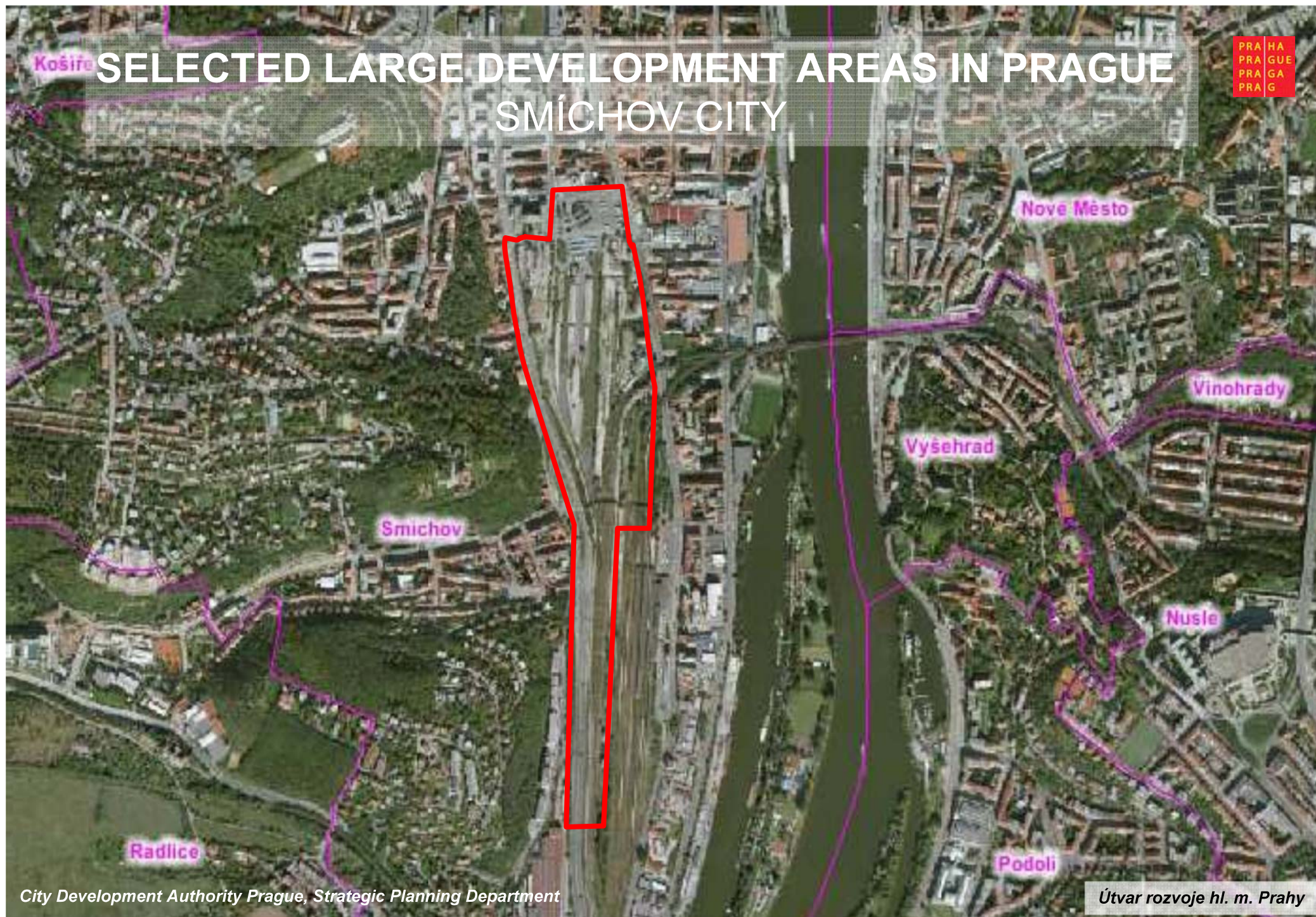


# REVITALISATION OF THE ROHAN ISLAND

## NEW RECREATION AREA







# SELECTED LARGE DEVELOPMENT AREAS IN PRAGUE

## SMÍCHOV CITY





# SELECTED LARGE DEVELOPMENT AREAS IN PRAGUE

## RAILWAY STATION SMÍCHOV – „SMÍCHOV CITY“





# SELECTED LARGE DEVELOPMENT AREAS IN PRAGUE SMÍCHOV CITY





# SOME OF THE PRAGUE'S DEVELOPMENT AREAS



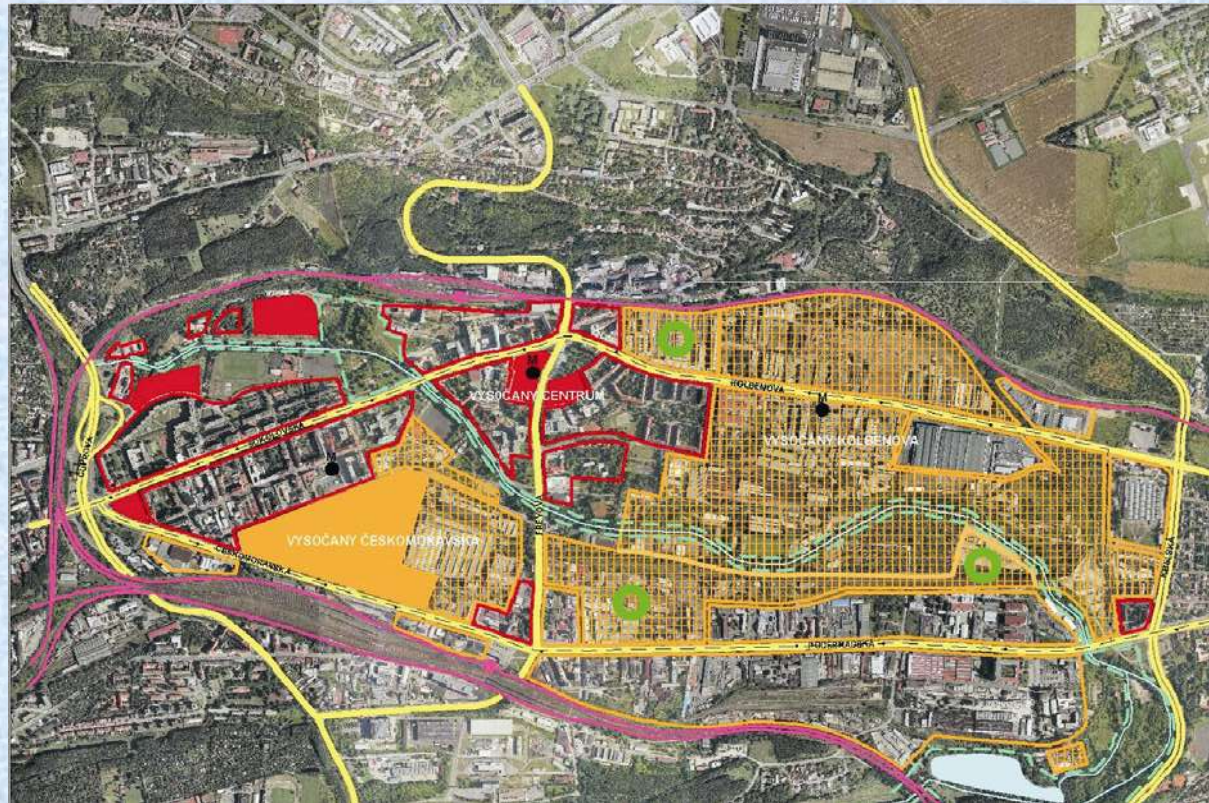
## VYSOČANY

**O**pportunities for the administrative complex and housing development  
- total proposed floor space 800,000-sqm

**F**ormer industrial district  
- the most important transformation area in Prague

**T**he vicinity of the Sazka Arena (2004 Ice-hockey World Championship)

**G**ood quality of transport service





# SELECTED LARGE DEVELOPMENT AREAS IN PRAGUE

## LIBEŇ DOCKS (PROPOSAL)





# SELECTED LARGE DEVELOPMENT AREAS IN PRAGUE

## LIBEŇ DOCKS (PROPOSAL)



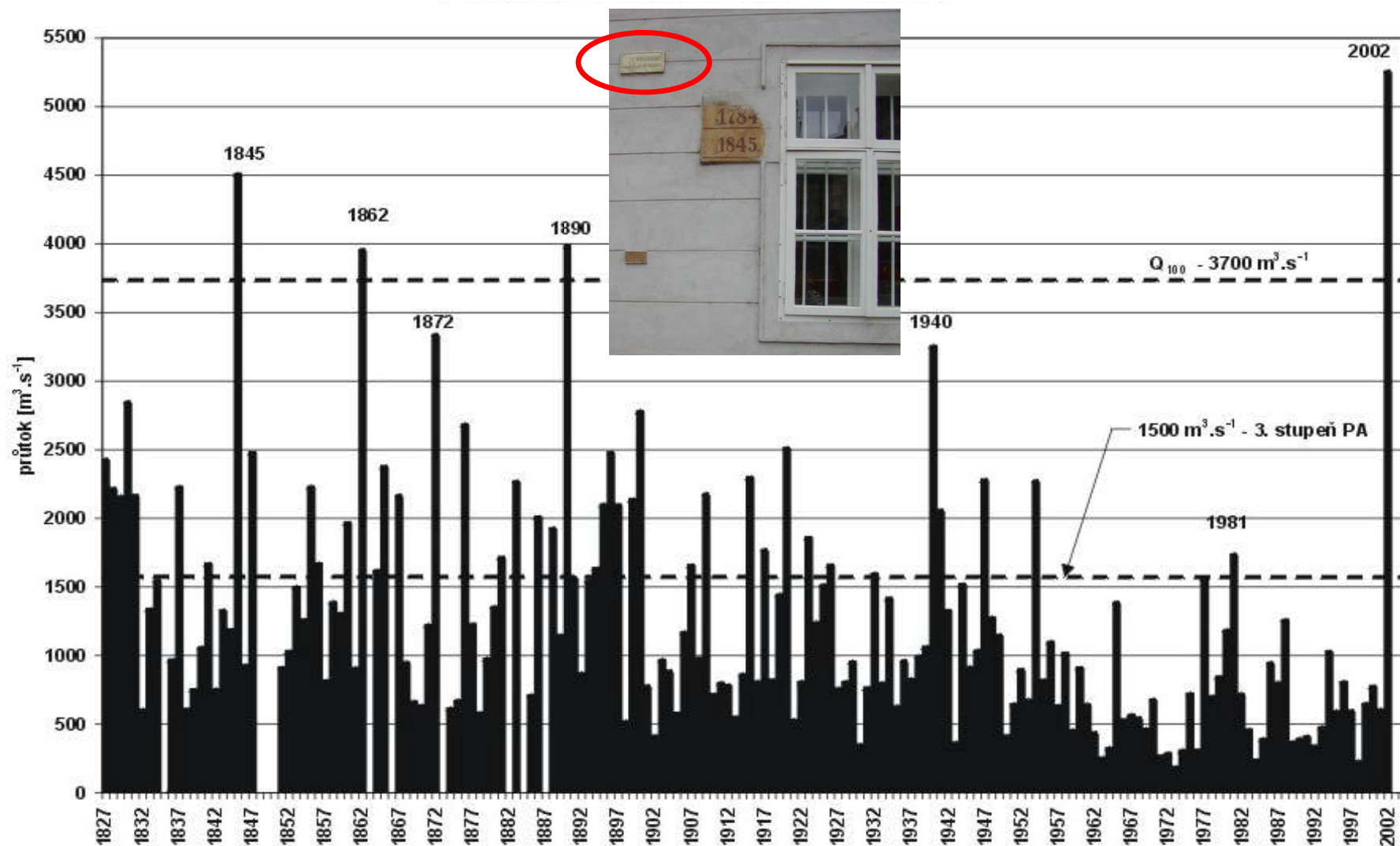


# KEY INFRASTRUCTURE PROJECTS

*Reliable, Functioning and Safe City*



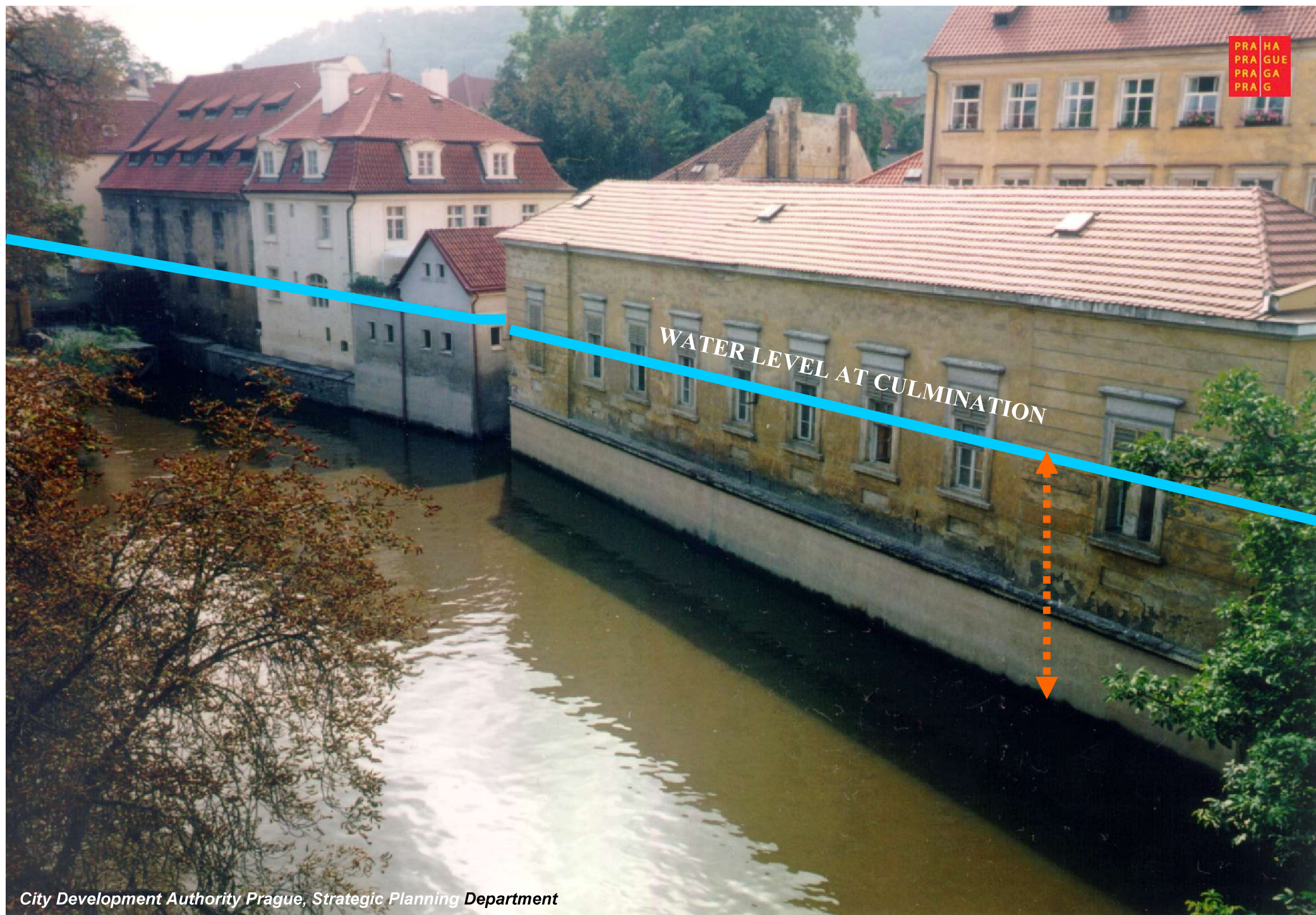
# VLTAVA RIVER - FLOODS IN PRAGUE (1827 – 2002)













# FLOODS 2002 IN PRAGUE



## DAMAGE ESTIMATION (in mil. CZK)

**Total** **26 914**

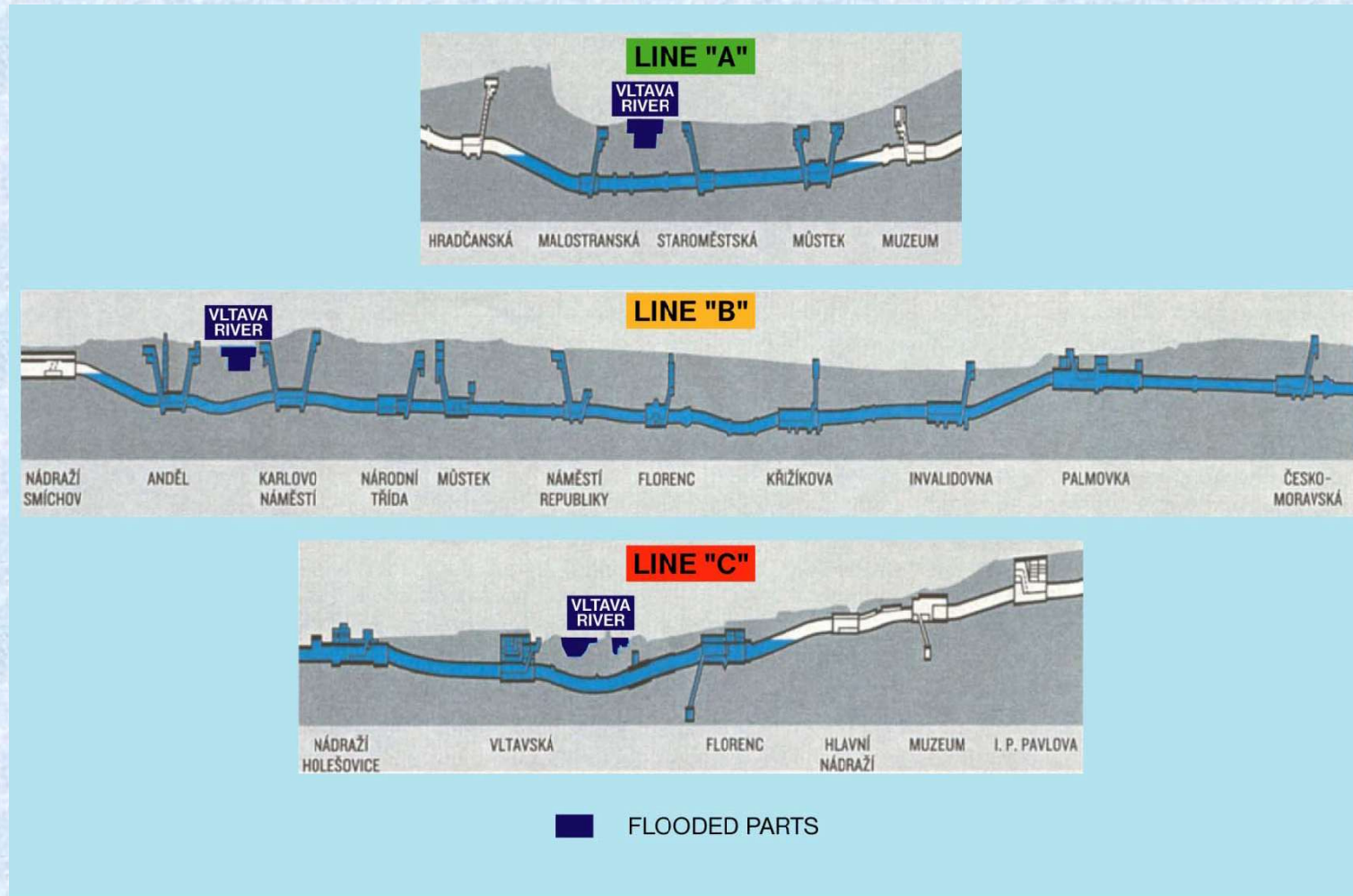
including:

**Prague municipal property** **7 775**

**Prague Metro** **6 866**



# PRAGUE METRO AFTER FLOODS – AUGUST 2002





# VLTAVA RIVER IN PRAGUE

15. 8. 2002, 16 h (AFTER CULMINATION)



-----  
Q 100 (digital model)

-----  
anti-flood measures  
(proposed in  
the Master Plan 1999)



# MOBILE BARRIERS (AUGUST 2002)

PRA  
PRA  
PRA  
PRA

HA  
GUE  
GA  
G

RIVER EMBANKMENT AT THE NATIONAL THEATRE

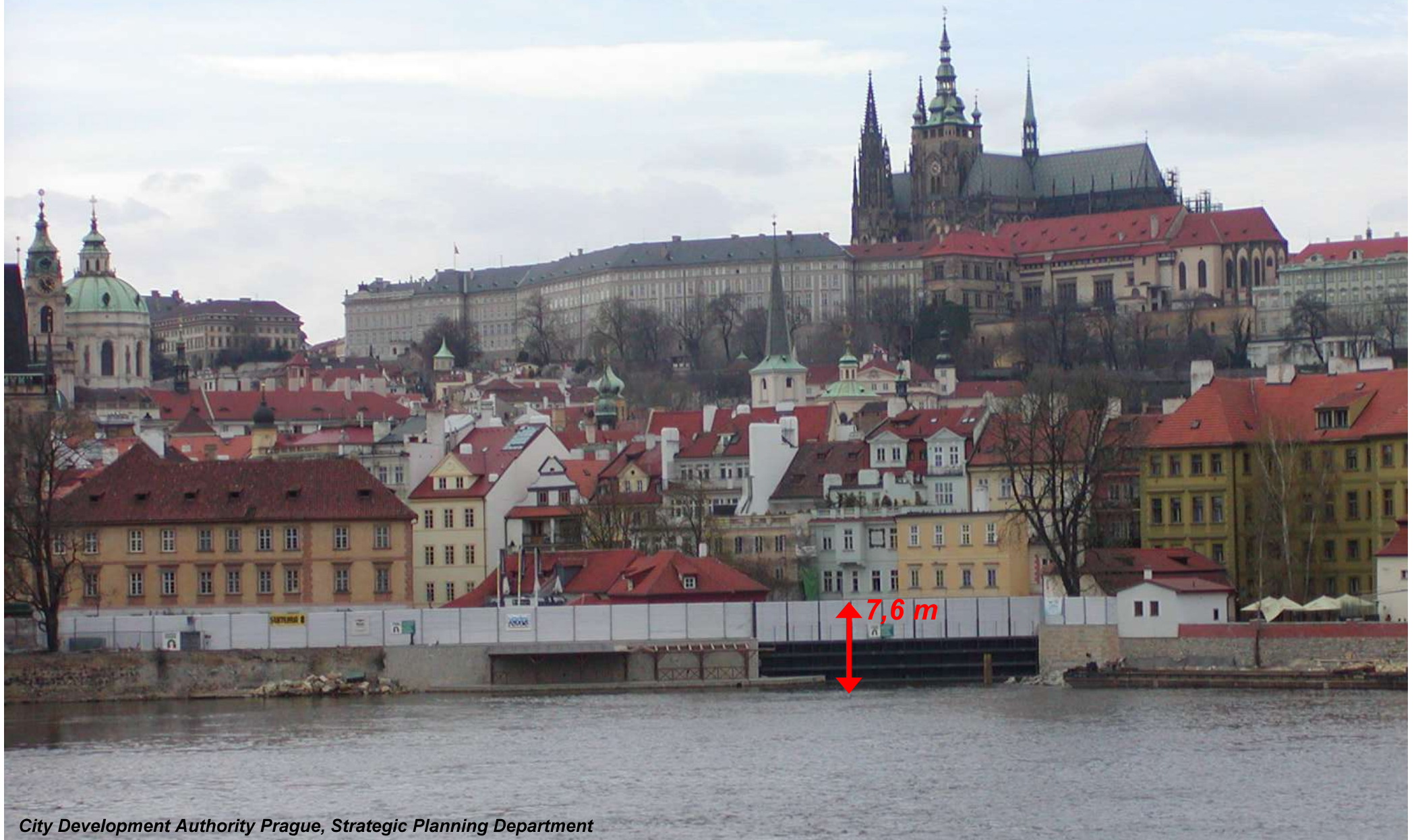


# NEW ANTI-FLOOD MEASURES IN PRAGUE

## LESSER TOWN – FLOOD GATE AND MOBILE BARRIERS

PRA  
PRA  
PRA

HA  
GUE  
GA  
G





# NEW ANTI-FLOOD MEASURES IN PRAGUE

## LESSER TOWN – BACK-SIDE OF MOBILE BARRIERS



FLOOD CONTROL BAG



**Anti-flood protection total costs (up to June 2010)**  
**3.170.000.000 CZK (= approx. 12.680.000 EUR)**